

barista accessories.

SPECIFICHE
TECNICHE

TECHNICAL
SPECIFICATIONS



08.08.2020

EVOLVE

barista tamper.



Tamper

tamper

Type GRN-201 T

L x P x H W x D x H
230 x 180 x 380 mm
9,06 x 7,09 x 14,96 in

Peso Weight
3,8 kg / 8,38 lb

Materiale del corpo
Body material
Alluminio - Aluminium

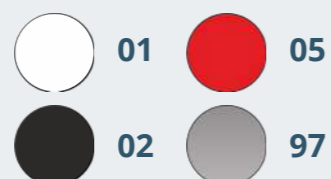
Imballo L x P x H
Master carton W x D x H
410 x 220 x 270 mm
16,14 x 8,66 x 10,63 in

Peso lordo Gross weight
4,5 kg / 9,92 lb

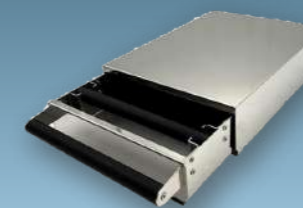
Euro pallet EU pallet
70 unità / 70 units

Container 20"
770 unità / 770 units

Container 40"
1.680 unità / 1.680 units



barista coffee box.



Coffee knock box

coffee box

Type GRN-201 CKB

L x P x H W x D x H
420 x 280 x 100 mm
16,54 x 11,02 x 3,94 in

Peso Weight
3,5 kg / 7,72 lb

Materiale material
Acciaio inox AISI 304
Stainless steel 304

Imballo L x P x H
Master carton W x D x H
500 x 350 x 150 mm
19,69 x 13,78 x 5,91 in

Peso lordo Gross weight
4 kg / 8,82 lb

Euro pallet EU pallet
52 unità / 52 units

Container 20"
572 unità / 572 units

Container 40"
1.248 unità / 1.248 units



Evolve S.r.l.

Via Papa Giovanni XXIII, 25

27058 Voghera Pavia Italy

Phone: +39 0534 076106

info@evolve.cloud

www.evolve.cloud

Barista Accessories Version 08.08.2020 Subject to change



...think beyond and evolve!

EVOLVE